



Covenant of Mayors
for Climate & Energy



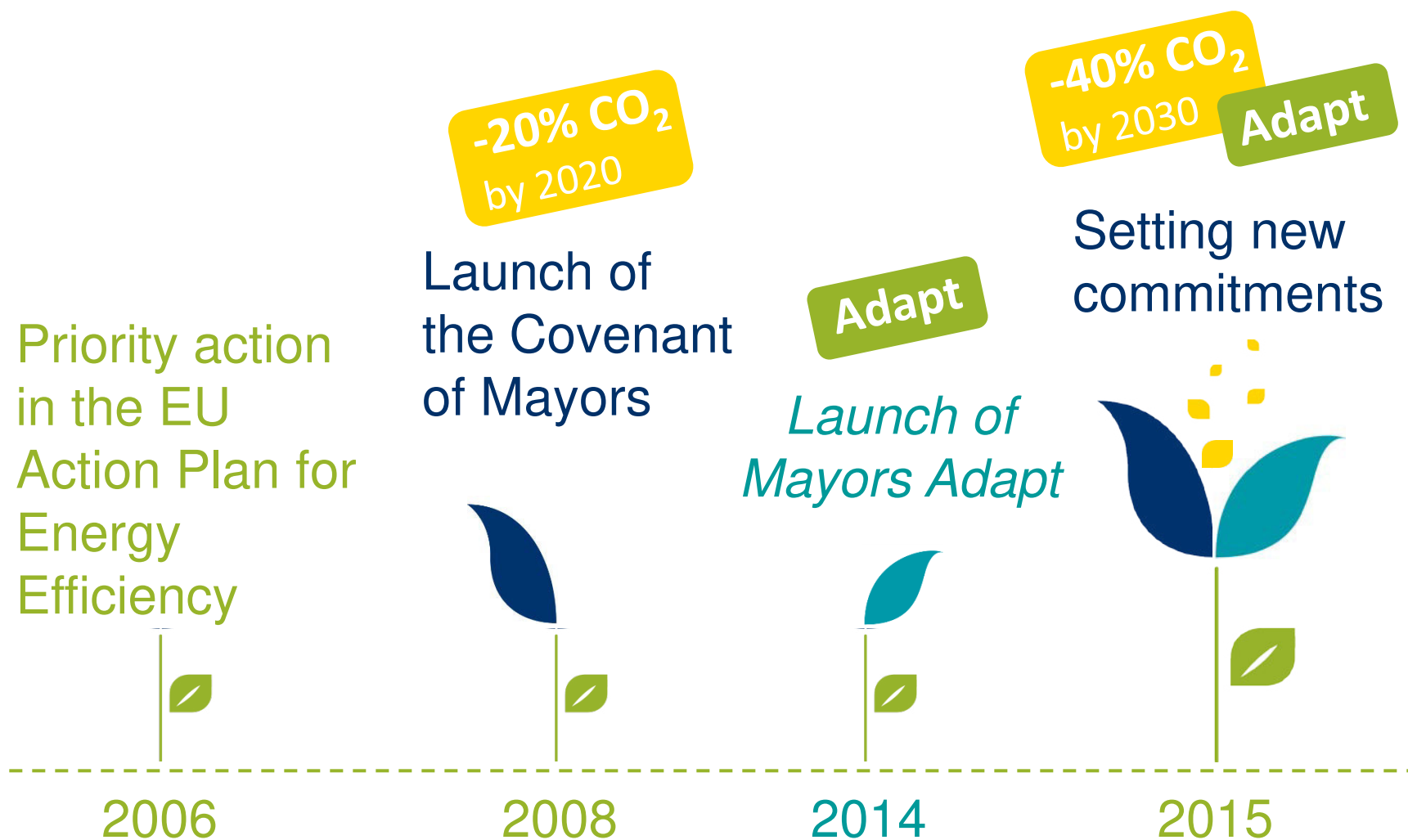
New developments in the Covenant of Mayors initiative



Granada | 12 April 2018



Evolution of the initiative



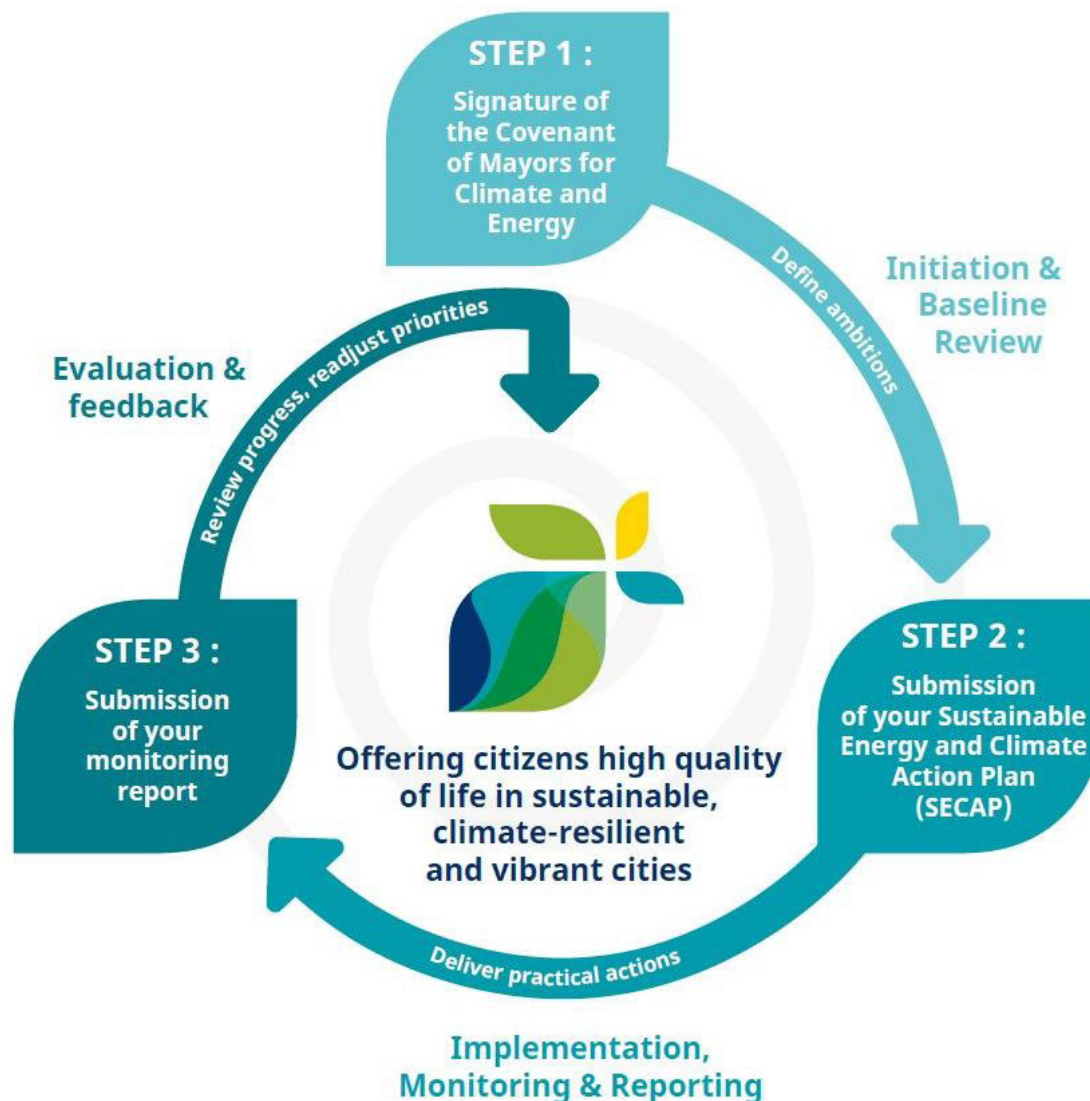
2015: New commitments



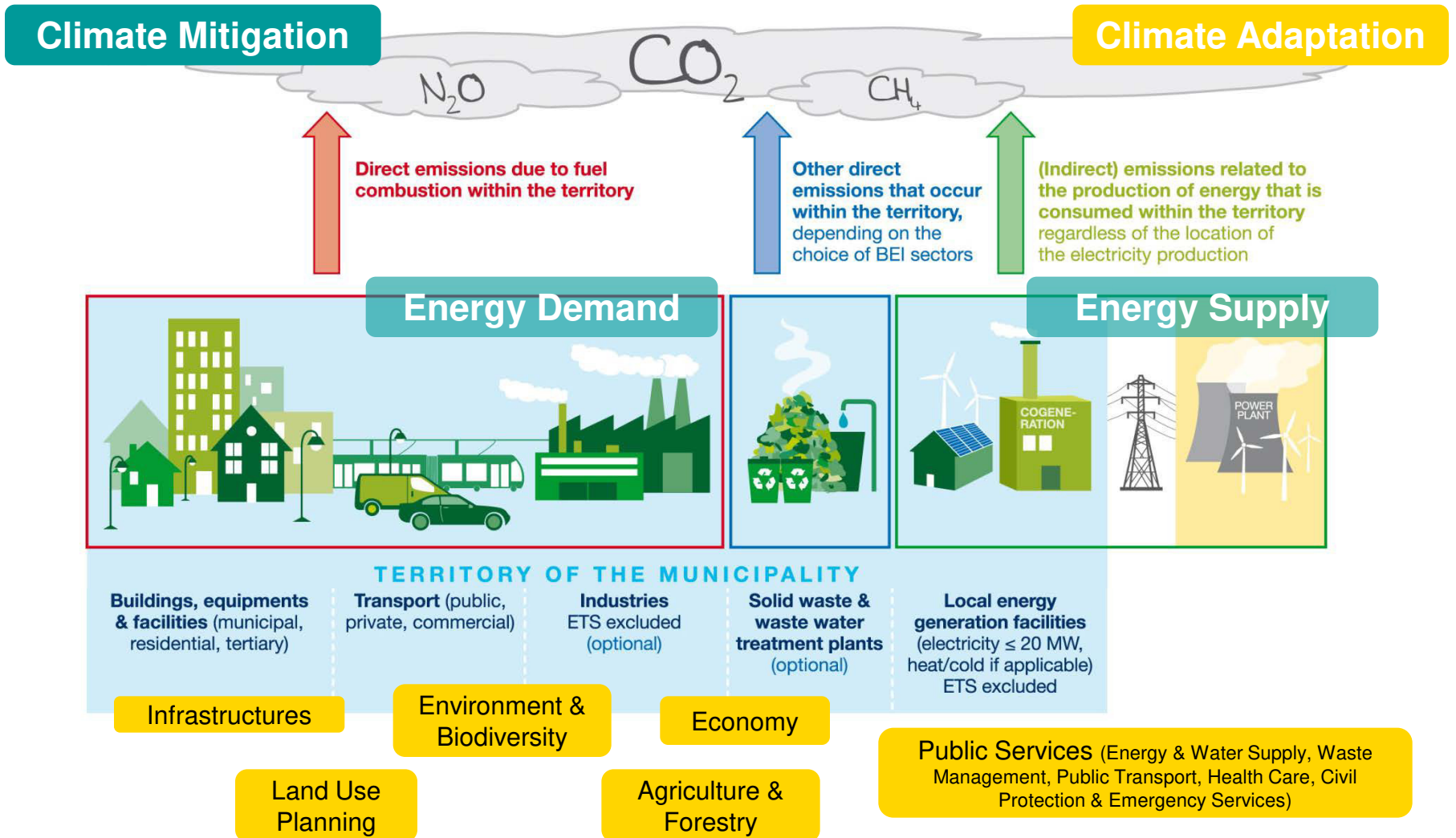
Signatories now pledge to:

- Reduce CO₂ (and possibly other GHG) emissions by at least **40% by 2030**
- **Increase our resilience** by adapting to the impacts of climate change
- Translate their political commitment into local results by developing local **action plans** and **reporting** on their implementation

The Covenant step by step



An integrated approach



Covenant Signatories' Commitments



STEPS \ PILLARS	MITIGATION	ADAPTATION
1) Initiation and baseline review	Preparing a Baseline Emission Inventory	Preparing a Climate Change Risk and Vulnerability Assessment
2) Strategic target setting & planning	Submitting a Sustainable Energy and Climate Action Plan (SECAP) and mainstreaming mitigation and adaptation* considerations into relevant policies, strategies and plans <u>within two years following the municipal council decision</u>	
3) Implementation, monitoring and reporting	Report progress <u>every second year following the SECAP submission</u> in the initiative's platform	

About the Covenant reporting framework



- It is an **online template** to be filled in the Covenant website restricted area – downloadable in an Excel format
- Accompanied with **guidelines** on how to fill it in (in all main EU languages)

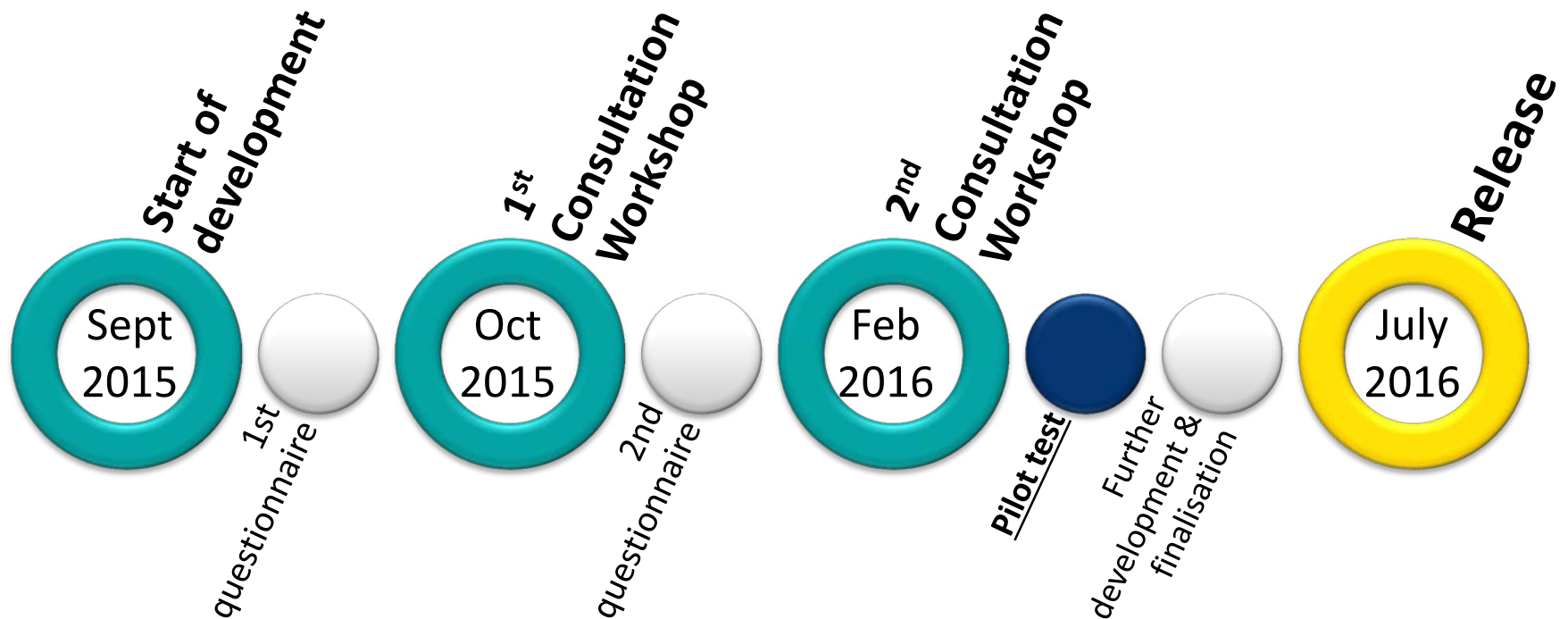
New reporting platform
launched 1 week ago-
SECAP template

New guidelines about
to be released

It allows signatories to collect and analyse data in a structured and systematic manner.



About the Covenant reporting framework



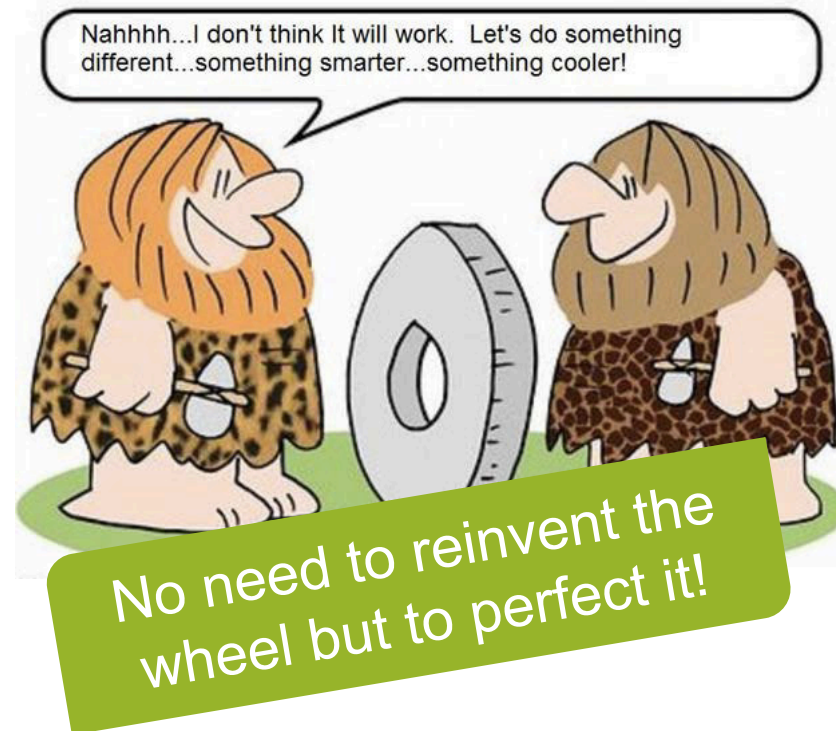
Shaped by cities, for cities - the template is the result of a continuous consultation process



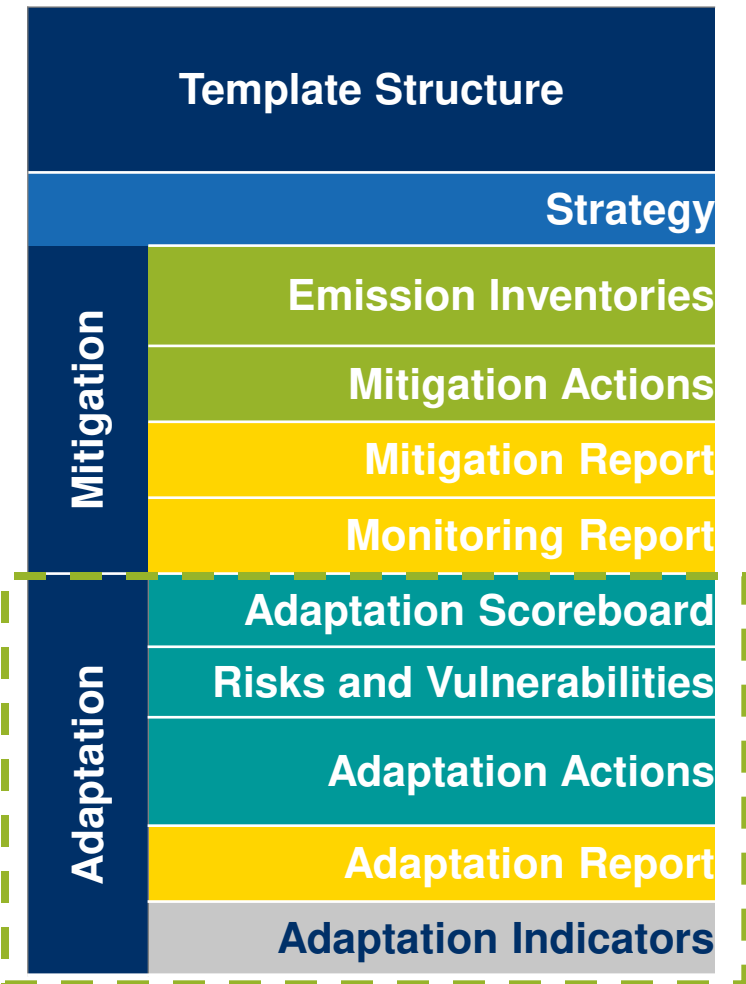
About the Covenant reporting framework



- Based on the findings of an extensive research & review process (e.g. EEA's reports on urban adaptation)
- Built upon the knowledge and lessons learnt from various initiatives working on a similar topic (e.g. UNISDR's "Making Cities Resilient" Campaign, CRAFT)



Contents – **WHAT** to report & **WHEN?**



- Including **3 tabs**:
 - “Adaptation Scoreboard”
 - “Risks & Vulnerabilities”
 - “Adaptation Actions”
- Report automatically generated** based on the data entered by the users
- “Indicators” in annex

Contents – **WHAT** to report & **WHEN**?

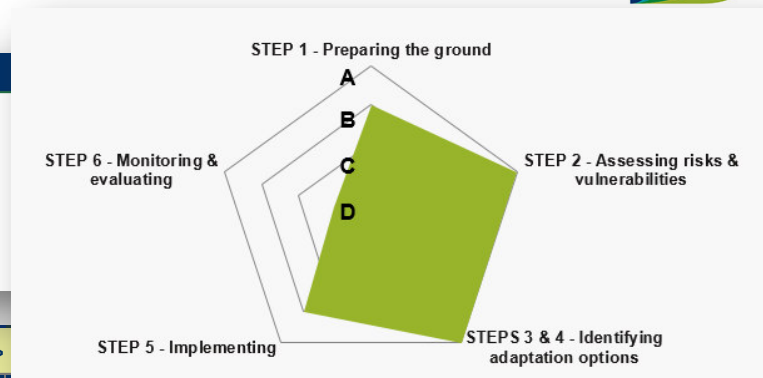


Template Structure		Content
Adaptation	Strategy	Dedicated to the vision, mitigation & adaptation target(s), the attribution of staff and financial capacities and the involvement of stakeholders and citizens.
	Adaptation Scoreboard	Showing where the local authority is in the adaptation process and what the priorities are (through simple radar graph).
	Risks and Vulnerabilities	Describing the main climate change risks and vulnerabilities identified in the territory
	Adaptation Actions	Listing individual (key) actions, including various relevant parameters (i.e. sector, timeframe, stakeholders and cost).

Contents – WHAT to report & WHEN?



Adaptation cycle steps	Actions	Self check of the Status
STEP 1 - Preparing the ground for adaptation ➔ STRATEGY	Adaptation commitments defined/integrated into the local climate policy	A
	Human, technical and financial resources identified	A
	Adaptation team (officer) appointed within the municipal administration and clear responsibilities assigned	A
	Horizontal (i.e. across sectoral departments) coordination mechanisms in place	A
	Vertical (i.e. across governance levels) coordination mechanisms in place	B
	Consultative and participatory mechanisms set up, fostering the multi-stakeholder engagement in the adaptation process	A
	Continuous communication process in place (for the engagement of the different target audiences)	A



<< Current Risks >>		<< Anticipated Risks >>			
Climate Hazard Type	Current hazard risk level	Expected change in intensity	Expected change in frequency	Timeframe	Risk-related indicators
<u>Extreme Heat</u>	Moderate	Impacted Policy Sector		Expected Impact(s)	Likelihood of Occurrence
<u>Extreme Cold</u>	Low	<u>Buildings</u>		(e.g. Increased Demand for Cooling and Insulation)	Unlikely
<u>Extreme Precipitation</u>	[Drop-Down]	<u>Transport</u>		(e.g. Damage to Infrastructure)	Possible
<u>Flood</u>		<u>Energy</u>		(e.g. Damage to Electrical Infrastructure and Power)	Likely
<u>Sea Level Rise</u>		Sector		Title (max. 120 chars)	Short Description (max. 300 chars)
<u>Drought</u>		Other		Compendium of climatic assessments for the greater municipal region	A report was published in the late-2000s that provides a compendium of climatic assessments for the greater municipal region. It includes maps of a variety of information that can help planners optimize new projects and retrofits for climate change.
<u>Storm</u>		Land Use Planning		Protecting at-risk natural areas and greening actions	In line with the abovementioned climatic assessments, the city placed a large portion of the city under the protection of nature conservation orders. The city has also stepped up its efforts to increase the amount of green space with a total of over 250,000 square meters of green roofs and over 30 kilometers of green tram tracks to name a few.
<u>Landslide</u>		Land Use Planning		Building ban	As a result of climatic assessments, the city administration has banned buildings in the hilly areas around the town and prevented building projects that might obstruct the ventilation effect of cold air flows at night
<u>Forest Fire</u>		Land Use Planning		Building ban	As a result of climatic assessments, the city administration has banned buildings in the hilly areas around the town and prevented building projects that might obstruct the ventilation effect of cold air flows at night
<u>Other</u>	[please specify]	Land Use Planning		Building ban	As a result of climatic assessments, the city administration has banned buildings in the hilly areas around the town and prevented building projects that might obstruct the ventilation effect of cold air flows at night
www.eumayors.eu		Other		(e.g. Decrease in Private Sector Engagement)	[Drop-Down]

e.g. Nber of days with public service interruptions

Contents – **WHAT** to report & **WHEN?**



Template Structure		Minimum Reporting Requirements		
		At the registration stage	Within 2 years	Within 4 years (and then every 2 years)
Adaptation	Strategy	optional	✓	✓
	Adaptation Scoreboard	✓	✓	✓
	Risks and Vulnerabilities	Optional	✓	✓
	Adaptation Actions	optional	optional	✓ (min. 3 Benchmarks)

A flexible & iterative process, allowing regular updates

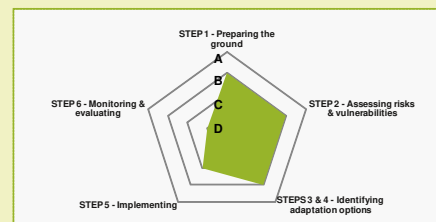


Procedures – WHAT's NEXT?

Publication of the (individual & aggregated) results under the online signatory profile, via the catalogue of good practices & through various reports

Evaluation & feedback (discussion ongoing – more to follow!)

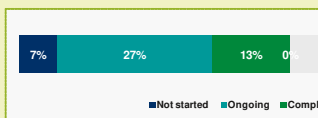
1) Signatory Status in the Adaptation Cycle
[Source: "Signatory Scoreboard" tab]



2) Risk Rating Matrix
[Source: "Risks & Vulnerabilities" tab]

Climate Hazard Type	Risk Level	Expected change in intensity	Expected change in frequency
Extreme Heat	!!	↑	↔
Extreme Cold	!	↔	↔
Extreme Precipitation	!!!	↑	↑
Floods	!!!	↑	↑
Sea Level Rise	!!!	↑	↑
Droughts	!!!	↑	↑
Storms	!!!	↑	↑
Landslides	!!!	↑	↑
Forest Fires	!!!	↑	↑
Other (please specify)			

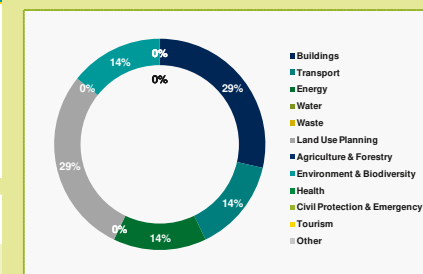
4) Status of the (Reported) Adaptation Actions
[Source: "Actions" tab]



3) Impact Rating Matrix
[Source: "Risks & Vulnerabilities" tab]

Impacted Policy Sector	Likelihood of Occurrence	Expected Impact Level	Timeframe
Buildings	Possible	!!	▶▶
Transport	Likely	!!!	▶▶
Energy	Likely	!!!	▶▶
Water			
Waste			
Land Use Planning			
Agriculture & Forestry			
Environment & Biodiversity			
Health			
Civil Protection & Emergency			
Tourism	Unlikely	!	▶▶
Other			

4) (Reported) Adaptation Actions by Sector
[Source: "Actions" tab]



A process ensuring transparency and comparability

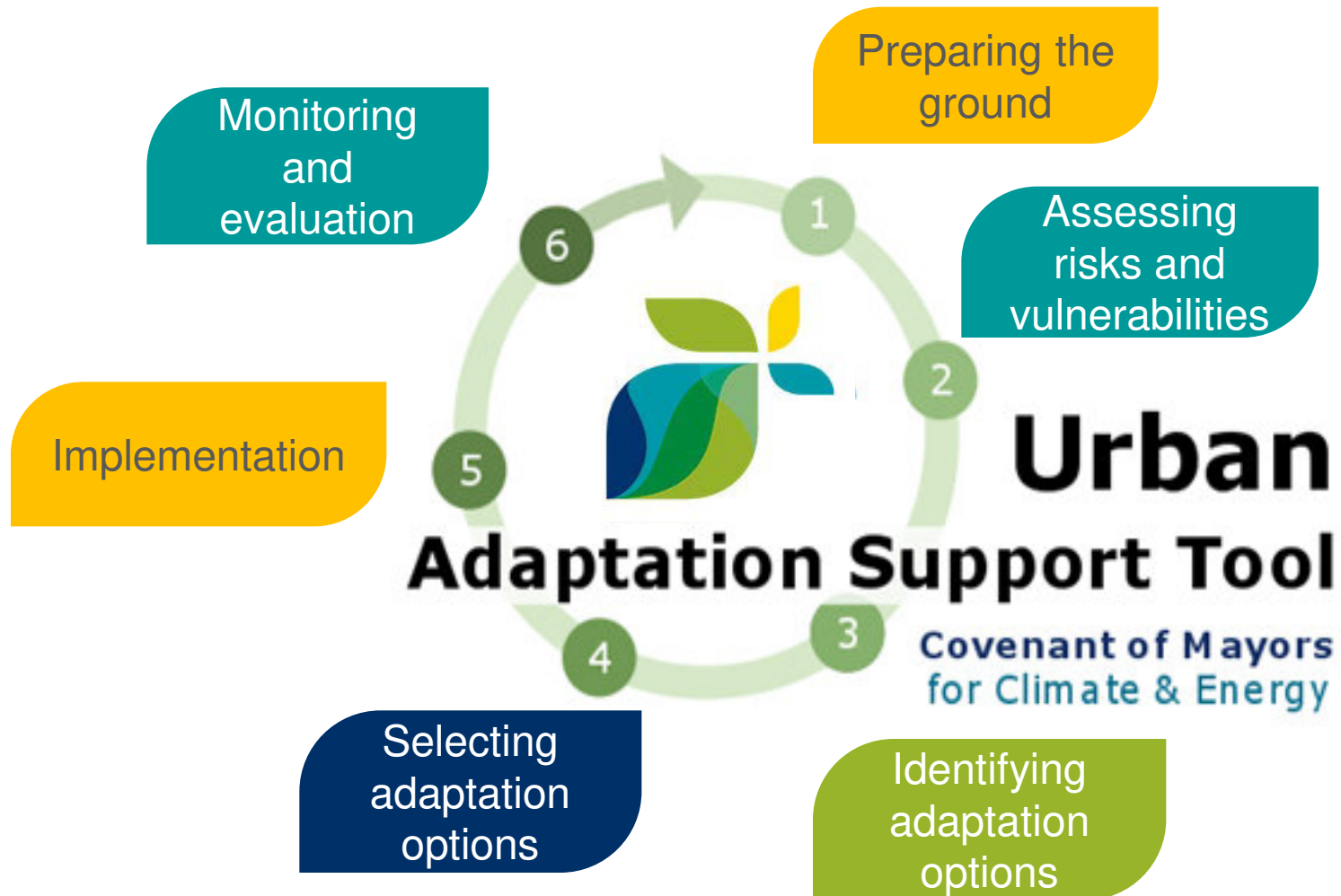


WHERE to find guidance?



- **Urban Adaptation Support Tool**, offering a step-by-step guidance through the adaptation planning and implementation cycles
- **E-learning Module on adaptation**, providing signatories with various examples and practical tips from peers
- **Financing Matrix**, giving an overview of the possible financing instruments
- But also: **Workshops & Webinars** – check our calendar!

Supporting signatories





Support to signatories

Financing matrix

European Structural and Investment Funds	European Funding Programmes	Project Development Assistance	Financial Institutions Instruments	Alternative Financing Schemes
Cohesion Fund	CEF	EEEF	EFSI	Citizen cooperatives
ERDF	Horizon 2020	ELENA	Municipal loans	Crowd-funding
EMFF	JPI Urban Europe	Horizon 2020 PDA	NCFE	EPC
ERDF	LIFE	JASPERS		Green municipal bonds
ESF	Territorial Cooperation			On bill financing
	UIA			Revolving loan funds
	URBACT			Soft loans, guarantees



Examples



Examples of adaptation tools

Wallonia

<http://leswallonssadaptent.be/>

Portugal

<http://climadapt-local.pt/>

Italy - Spain

Several [LIFE](#) Projects

UK

[UKCIP tool](#)



Integrated Regional Plan Emilia Romagna

- Cooperation with ANCI ER , ARPA ER & ERVET.
- Asked municipalities to choose the most suitable institutional levels to launch and support the integrated actions on the territory
Joint SEAPs → 294 / 340 municipalities - 94% citizens.
- **Capacity-building & exchange of experience** : info sessions – energy managers training
- **Technical support to SEAP development, implementation & monitoring** → Excel files + free web-based software (methodologies and tools for the quantification of results of the actions)
- **Financial support through ERDF**
 - €1 million for SEAP development
 - Energy revolving Fund for SMEs, €1 million through low interest loans
 - 2014-2020 > €104 million to the IV priority axis: Promote a low carbon economy within the territory and the productive system.

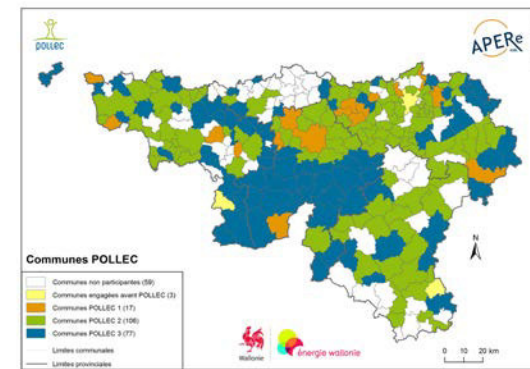
POLLEC the walloon programme for municipalities



- POLLEC program (Local Policy Energy Climate) launched in 2012
- The Walloon Government gives **financial** and **methodological support** to Walloon municipalities for the development and the implementation of their SEAPs and SECAPs.
- 200+ municipalities involved – 80% of the population

The highlights:

- CoM has now been **fully integrated** as the framework for municipal energy planning. Tools previously developed by the walloon organisations are now aligned with the CoM tools.
- This year the region has also **linked some regional funding with** having a SECAP.



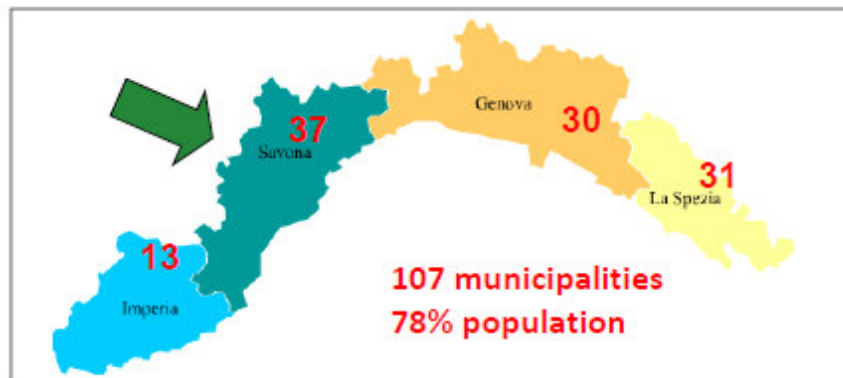
Tools offered by the Walloon region

POLLEC 1	POLLEC 2	POLLEC 3
<p>Technical specifications to hire an external consultant</p> <p>Local energy data by sector for each municipality in 2006</p> <p>Carbon Calculator for municipal buildings</p>	<p>POLLEC 1 tools</p> <p>Customised SEP tool validated by the CoM Office</p> <p>Municipal energy and GHG inventory for 2006</p> <p>Tool “State of the art”</p> <p>Tool “climate change risks vulnerability assessment”</p> <p>Tool “Strategy”</p> <p>Tool “SEAP”</p> <p>Awareness raising tools (carbon calculators for citizens, companies, ..)</p> <p>Support for finding funding options</p>	<p>POLLEC 1&2 tools</p> <p>Tool planification of adaptation measures at local level</p>

Tools developed by the region, APERe and AWAC



Liguria Region



IRE Regional Energy agency
40 SEAPs in 3 provinces
1 SECAP in progress

4 Structures to Support and
coordinate the Covenant of Mayors

IRE SpA

1 ELENA
Province of Savona

1 PDA
Region of Liguria

ELENA “Prosper” – The Project



Province of Savona Pact for Energy Efficiency and Renewables

Carries out actions of energy requalification for Municipalities in the Province of Savona by involving ESCOs, that will see a pay back of the interventions in the savings that are generated over time.

European Programme: EIB - ELENA

Duration: January 2015-December 2017

Total investment: € 42 million

Cost of Project Development Services (PDS): € 1.46 million

Contribution from ELENA: € 1.34 million

Leverage Factor: 1:32

Partnership:

Province of
Savona + 33
Municipalities



Use of Funds:

For technical assistance and all the procedures that are required so that the Province of Savona can prepare projects and issue tenders for sustainable energy

IRE assisted the Province of Savona in drawing up the investment project and signing the contract with the EIB



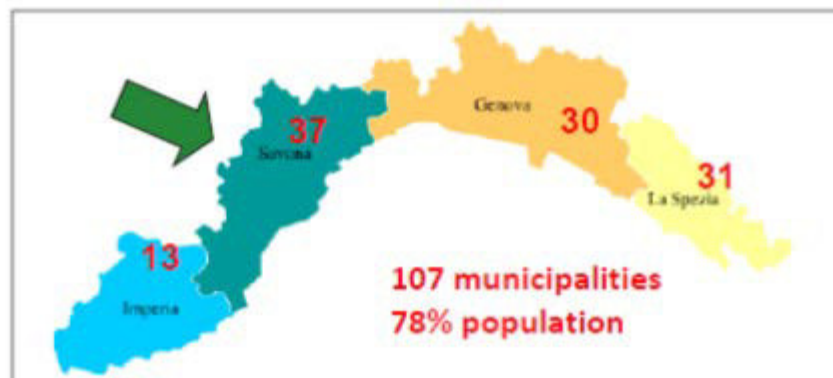


Province of Limburg BE

- 44 signatories:
 - 11 signatories <10 000 inhabitants
 - **31 signatories from 10 000 to 50 000 inhabitants**
- Scientific study to define the concept of climate neutrality
- Technical support in data collection for inventories and for actions' impact estimations
- "ESCOLIMBURG2020" project (MLEI PDA): partnership between the Province, an energy grid operator and a consultant. Aim: making the municipal and provincial buildings more energy-efficient and integrating renewable energy sources

Exemples d'initiatives régionales

Liguria



4 Structures to Support and coordinate the Covenant of Mayors

IRE SpA

Set up of a regional energy and GHG observatory

Technical support to municipalities (Data collection, BEI, SEAP, monitoring)

Multi-level cooperation with the provinces and the region

Implementation of the local and regional plans

Liguria Region: 2 major investment projects

PROSPER Prov. of Savona Pact for Energy Efficiency and Renewables



Partnership : Province of Savona + 33 Municipalities

Total Investment 42 million EUR investment plan

Cost of Project Development : 1,46 million EUR funded by the European Investment Bank

**Energy efficiency in
PUBLIC LIGHTING: 19
municipalities + Province**

**ENERGY EFFICIENCY in 151
buildings (municipal
offices**

**SOLAR THERMAL PLANTS
in 18 buildings**

**14 BIOMASS BOILERS to
serve 24 public buildings
in 19 municipalities**

3 MINI-HYDRO PLANTS

Liguria Region: 2 major investment projects

enerSHIFT



Partnership : Region Liguria + IRE + local agencies for social housing

Total Investment 15 million EUR investment plan

Cost of Project Development : 967 000 EUR funded by H2020

AIM: promotes retrofitting of public social housing buildings in Liguria using a self-financing mechanism that involves ESCOs and where pay back of the interventions will be generated in savings over time



ELENA “Prosper” - a focus on investments

PART A – € 31.4 million

- Energy efficiency on **PUBLIC LIGHTING**: 20,918 lamps in 19 municipalities + street lighting in the Province (total 21,886);
- **ENERGY EFFICIENCY** in **151 buildings** (municipal offices, old peoples' homes, sport facilities and 73 schools): insulation for the facades and retrofiting building envelopes, heating...
- **14 BIOMASS BOILERS** to serve **24 public buildings** in 9 different municipalities;
- **SOLAR THERMAL PLANTS** in **18 buildings** (sports facilities or homes for the aged) for a total of 250 m² panels;
- **14 biomass boilers** are also foreseen in **GREENHOUSES**, to replace the current diesel heaters.
- **3 MINI-HYDRO PLANTS** to be installed on the aqueduct pipelines for a total of 690 kW.

PART B – € 10.6 million

Part B of the investment programme includes interventions with a longer payback time, that will be implemented by the municipalities with the aid of European Structural Funds:

- **ENERGY EFFICIENCY** (window substitution, insulation, housing envelopes) in 44 buildings;
- **PHOTOVOLTAIC** and **SOLAR THERMAL** plants.

enerSHIFT – the Project



enerSHIFT - Social Housing Innovative Financing Tender for Energy

Promotes retrofitting of public social housing buildings in Liguria using a self-financing mechanism that involves **ESCOs** and where pay back of the interventions will be generated in savings over time.

European Project: Horizon 2020 PDA - Project Development Assistance

Duration: February 2016 – January 2019

Budget: € 967,687.50

Partnership 7 stakeholders in Liguria



1. Regione Liguria (lead partner)
2. **IRE SpA – Energy Department**
3. ARTE Genova
4. ARTE La Spezia
5. ARTE Savona
6. ARTE Imperia
7. Tenants' associations (Sunia, Sicet, Uniat) – have a key role acting as a go between in every step of the project

The role of IRE:

IRE drew up the project proposal and is the technical partner in charge of preparing the baseline, evaluating energy consumption as well as elaborating and planning sustainable energy investment schemes



enerSHIFT - Activities

- **diagnosis** of current energy consumption in 43 public social housing buildings that are owned by ARTE in Liguria,
- highlighting **interventions** that will **improve** technology and buildings,
- **financial engineering** to cover the investments required,
- issuing a **tender** intended solely for ESCOs for the energy performance of buildings.

The project will generate investments of €15 million, thanks to which interventions on 44 buildings can be carried out (235,000 m²) that house 3,300 families



EXPECTED RESULTS: annual savings of 14.5 GWh of primary energy (-55%) which amounts to €1.4 million yearly and a reduction of 3,492 tCO₂ emissions, not to mention an increase in the use of renewable energy sources (biomass and solar energy)



Province of Limburg BE

- 44 signatories:
 - 11 signatories <10 000 inhabitants
 - **31 signatories from 10 000 to 50 000 inhabitants**
- Scientific study to define the concept of climate neutrality
- Technical support in data collection for inventories and for actions' impact estimations
- "ESCOLIMBURG2020" project (MLEI PDA): partnership between the Province, an energy grid operator and a consultant. Aim: making the municipal and provincial buildings more energy-efficient and integrating renewable energy sources

Limburg Climate Fund, BE



Limburg Climate Fund : cooperative fund which invests its resources in climate-friendly projects by the means of loans.

- ✓ €100 shares for citizens - a max of 30 shares per person.
- ✓ Investments in solar power plants or wind turbines.
- ✓ Limited profits but unique opportunity to directly **involve households and to help project developers finance small to medium-sized projects** at relatively low interest rates (and guarantees apply).

In the renewable energy sector alone 70,000 cooperative members raised €100 million in recent years in Belgium.

Synergies with other initiatives & projects



PROSPECT

- PROSPECT

- Peer-to-peer exchanges for local and regional authorities on financing

www.h2020prospect.eu

- ManagEnergy

- Masterclasses and peer-to-peer exchanges for energy agencies on financing

www.managenergy.net



Co-funded by the Horizon 2020 programme of the European Union